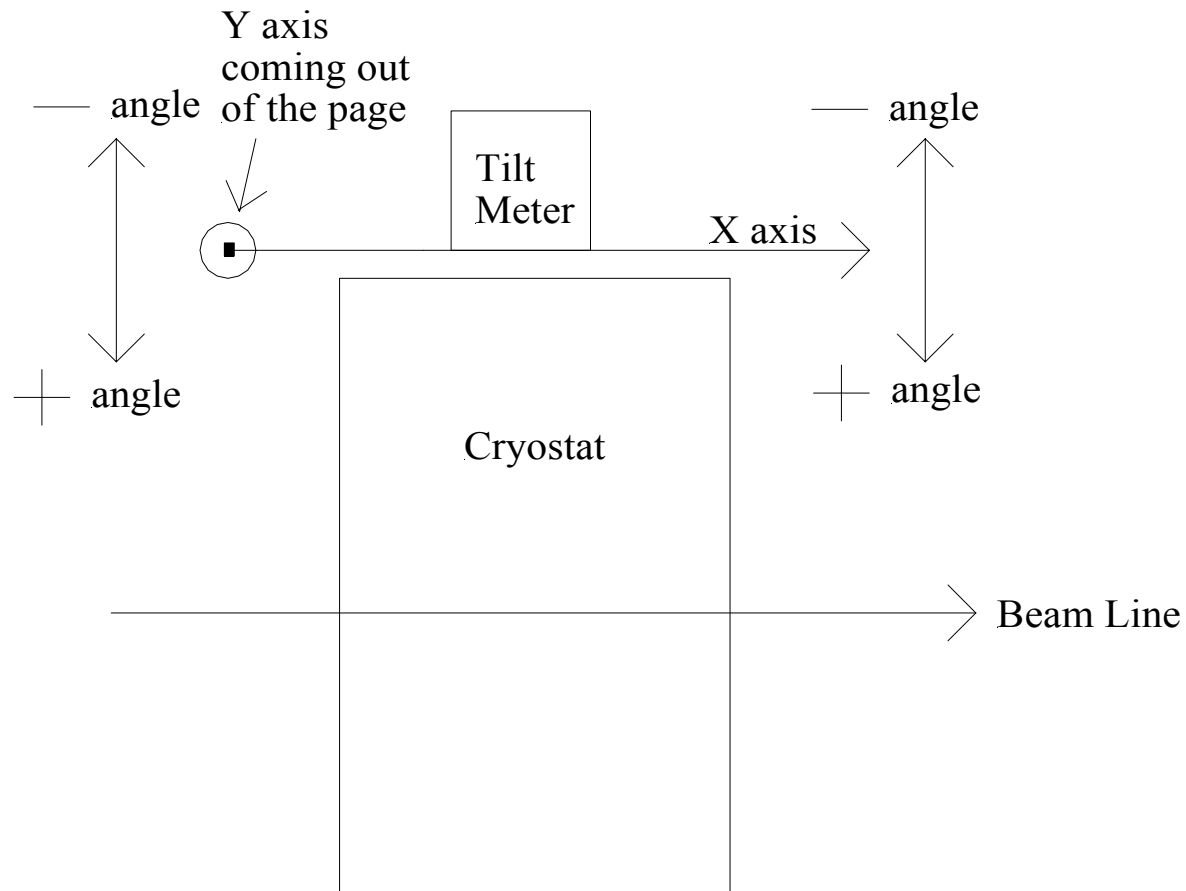


# Tilt Meters Sectors 3, 4, 7 and 8 Triplets

Data from the top and bottom of the  
cryostats

9/28/05-11/11/05

# Tilt Meter Setup



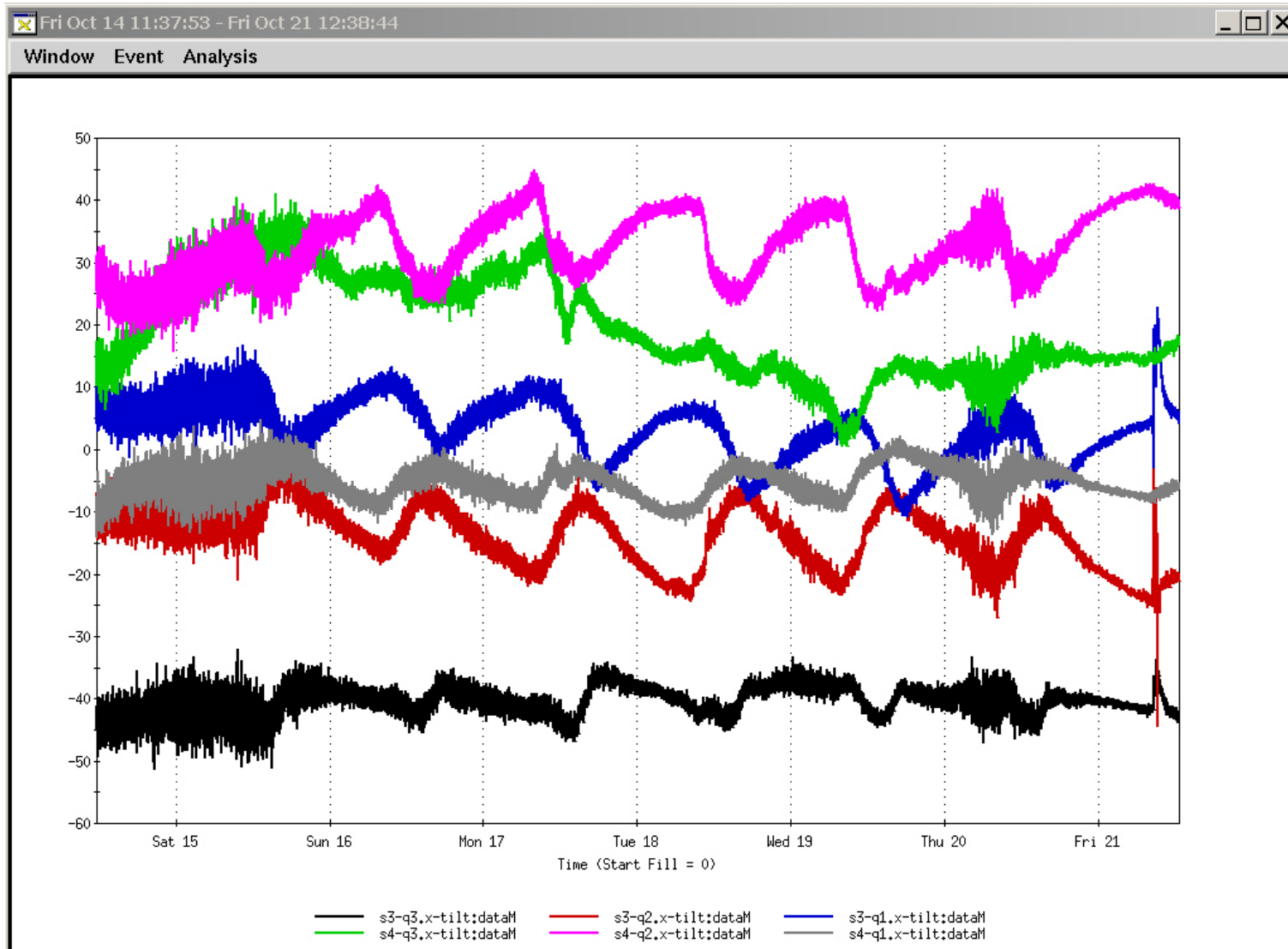
# Comparison of X (Mounted on the Bottom)

<b>Magnet</b>	<b>Sector 3 X Max pp (uradians)</b>	<b>Sector 4 X Max pp (uradians)</b>	<b>Sector 7 X Max pp (uradians)</b>	<b>Sector 8 X Max pp (uradians)</b>
Q3	12	16	19	11
Q2	16	16	10	24
Q1	12	10	12	10

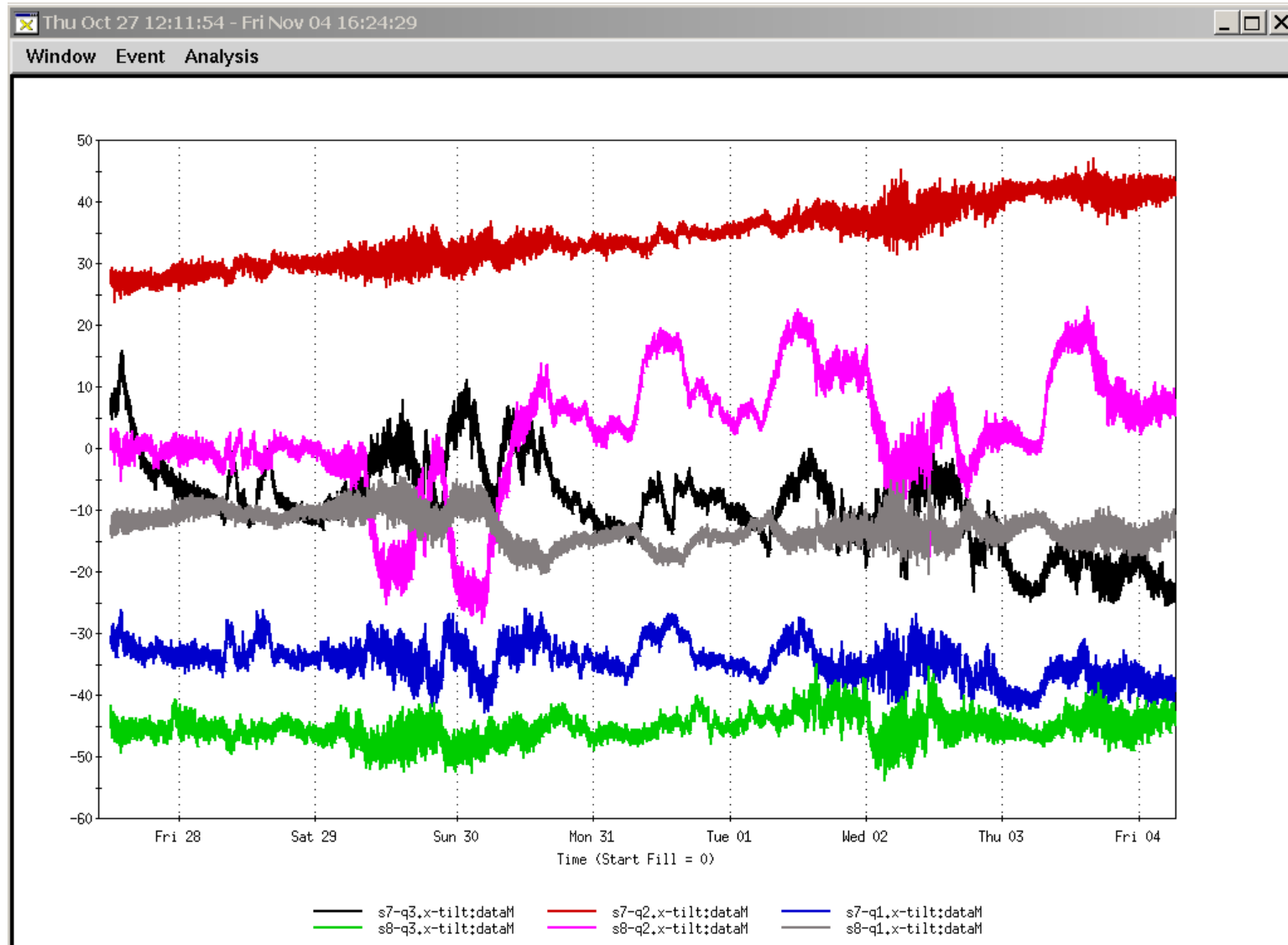
# Comparison of Y (Mounted on the Bottom)

<b>Magnet</b>	<b>Sector 3 Y Max pp (uradians)</b>	<b>Sector 4 Y Max pp (uradians)</b>	<b>Sector 7 Y Max pp (uradians)</b>	<b>Sector 8 Y Max pp (uradians)</b>
Q3	10	24	36	9
Q2	25	20	14	11
Q1	18	12	16	16

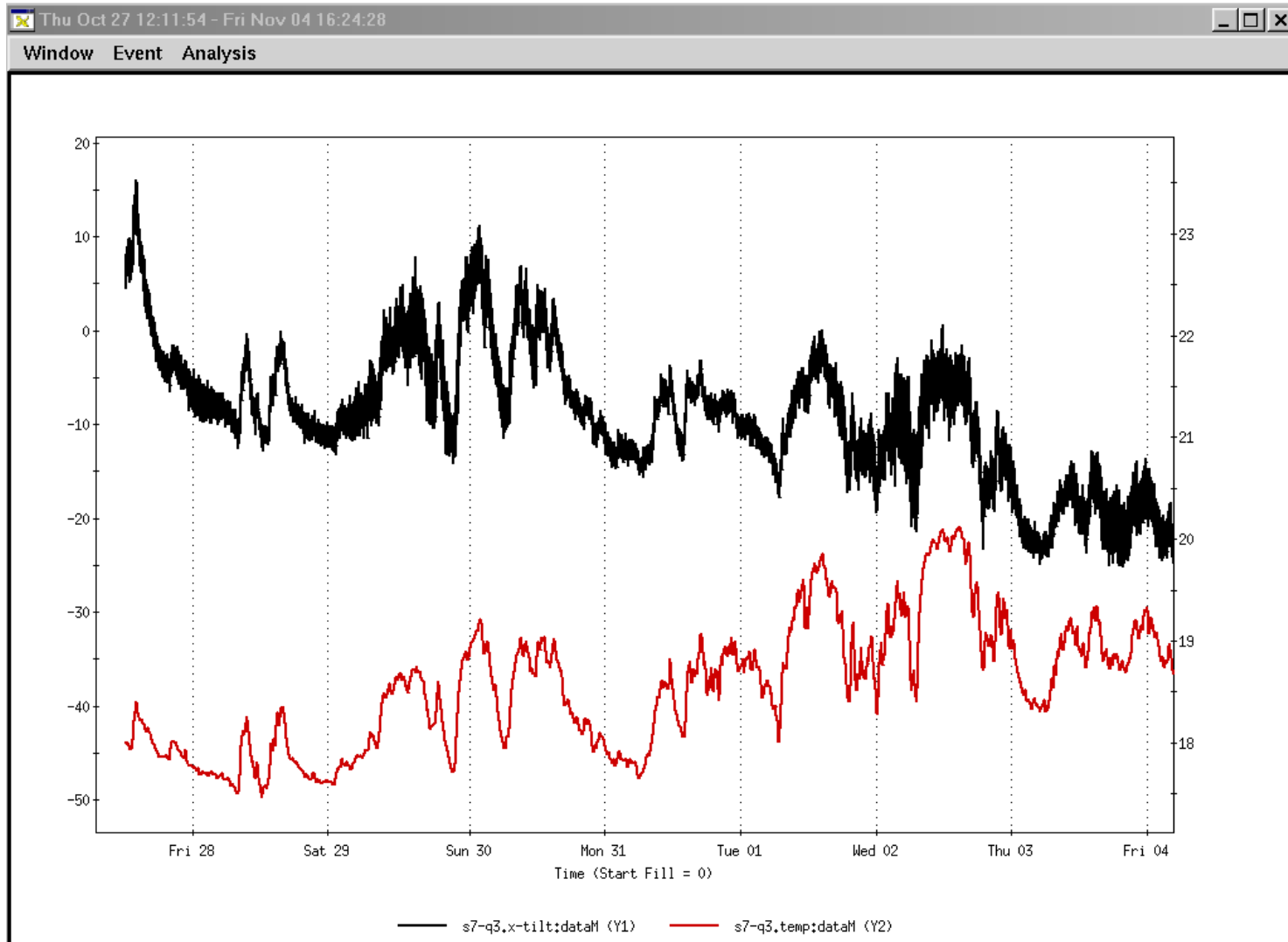
# Sectors 3 and 4 Meters on Bottom-X



# Sectors 7 and 8 Meters on Bottom-X



# Sector 7 Q3 X Tilt and TiltMeter Temperature - Bottom

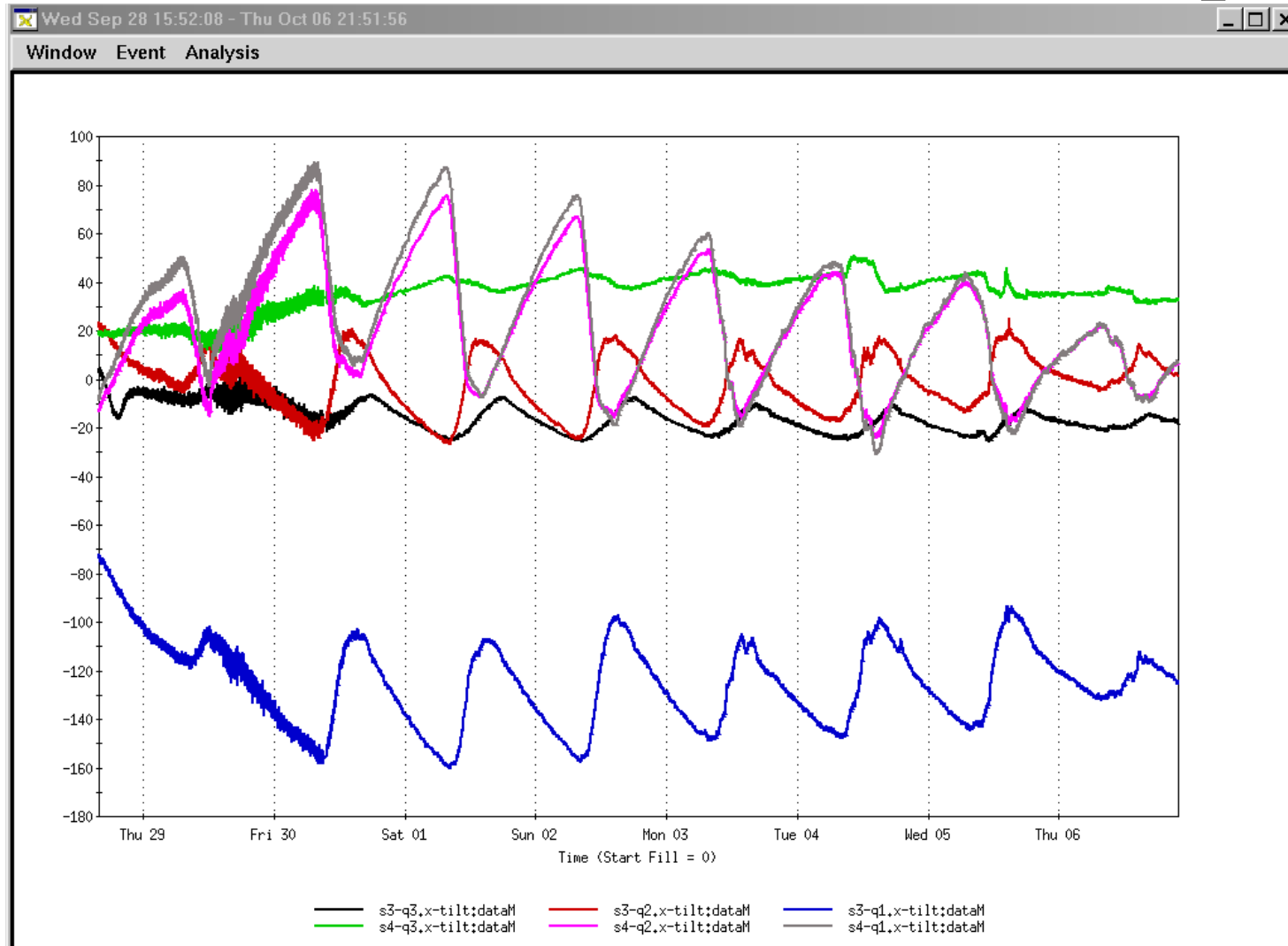


# Comparison of X (Mounted on the Top)

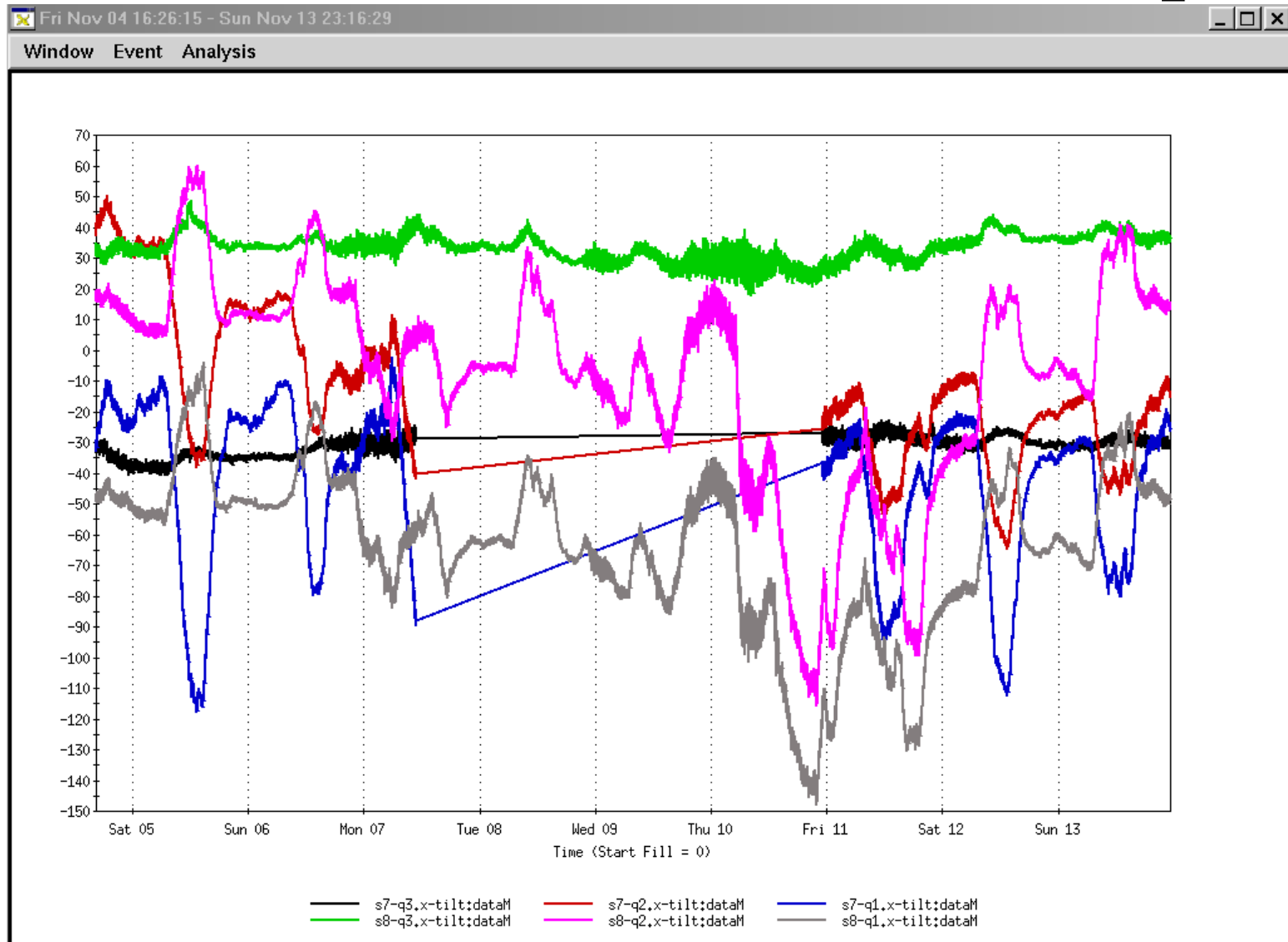
<b>Magnet</b>	<b>Sector 3 X Max pp (uradians)</b>	<b>Sector 4 X Max pp (uradians)</b>	<b>Sector 7 X Max pp (uradians)</b>	<b>Sector 8 X Max pp (uradians)</b>
Q3	18	6	8	10
Q2	38	73	50	125
Q1	60	78	134	102



# Sectors 3 and 4 Meters on Top-X



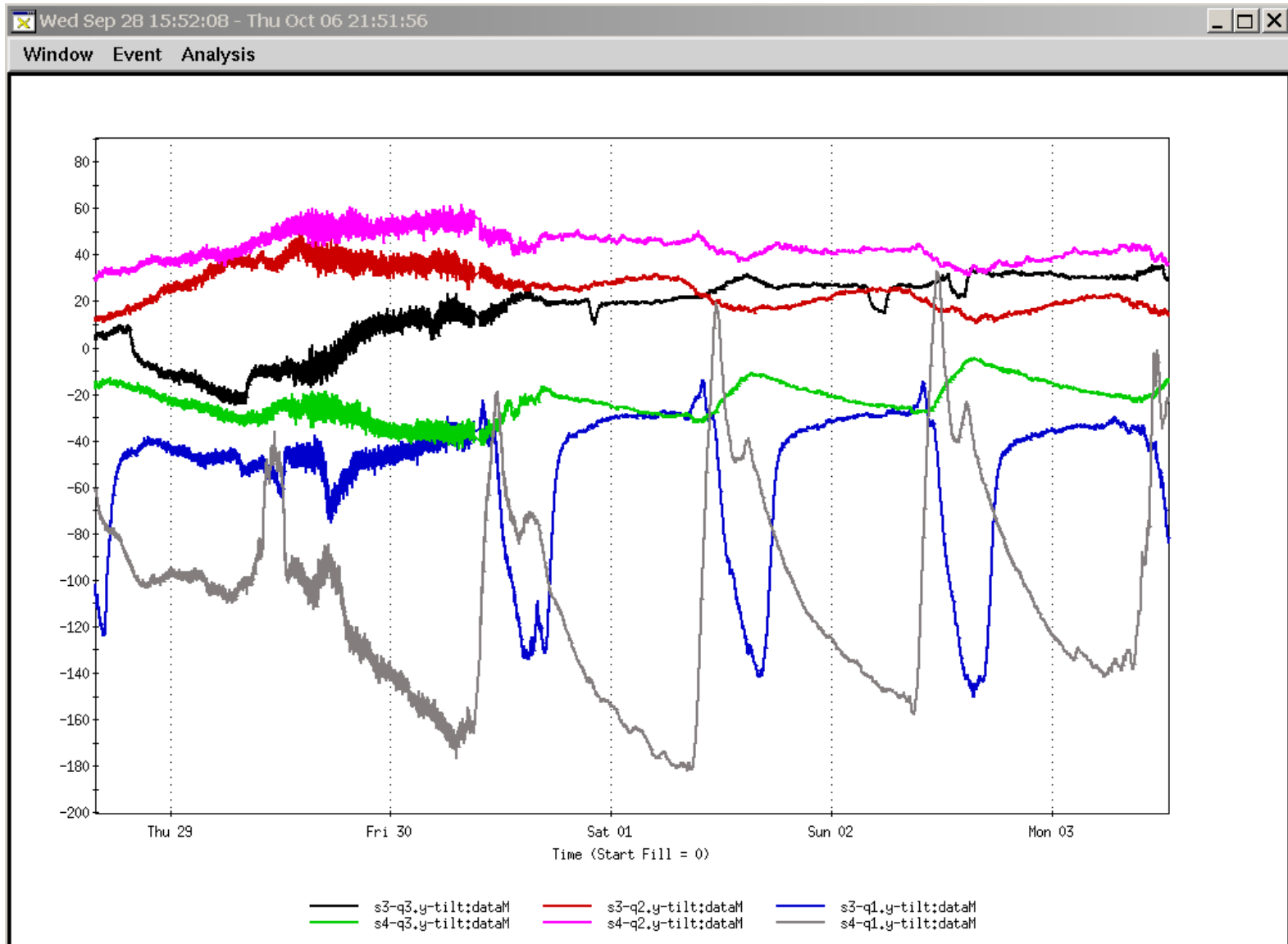
# Sectors 7 and 8 Meters on Top-X



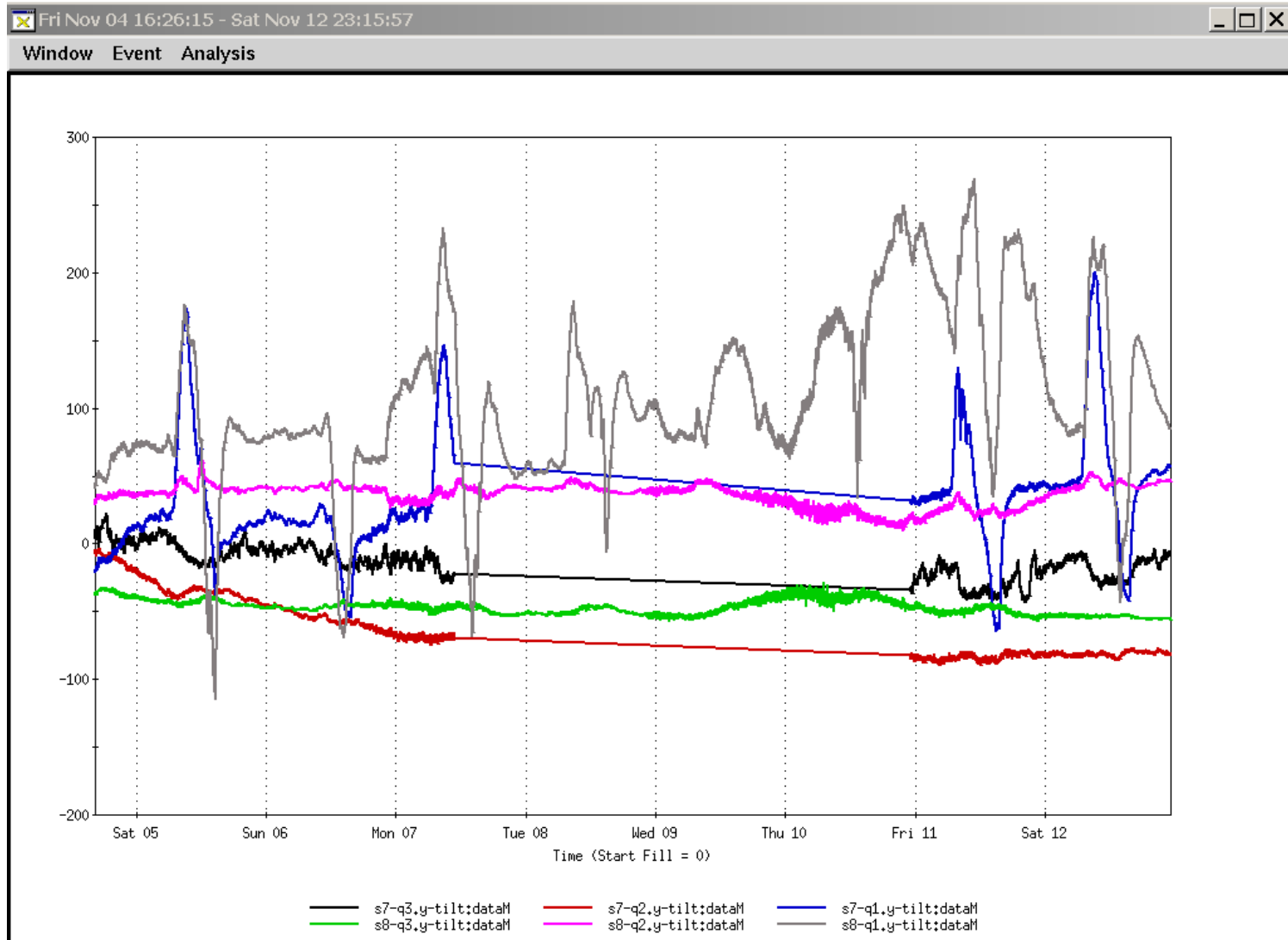
# Comparison of Y (Mounted on the Top)

<b>Magnet</b>	<b>Sector 3 Y Max pp (uradians)</b>	<b>Sector 4 Y Max pp (uradians)</b>	<b>Sector 7 Y Max pp (uradians)</b>	<b>Sector 8 Y Max pp (uradians)</b>
Q3	15	21	19	20
Q2	10	12	8	19
Q1	156	196	233	237

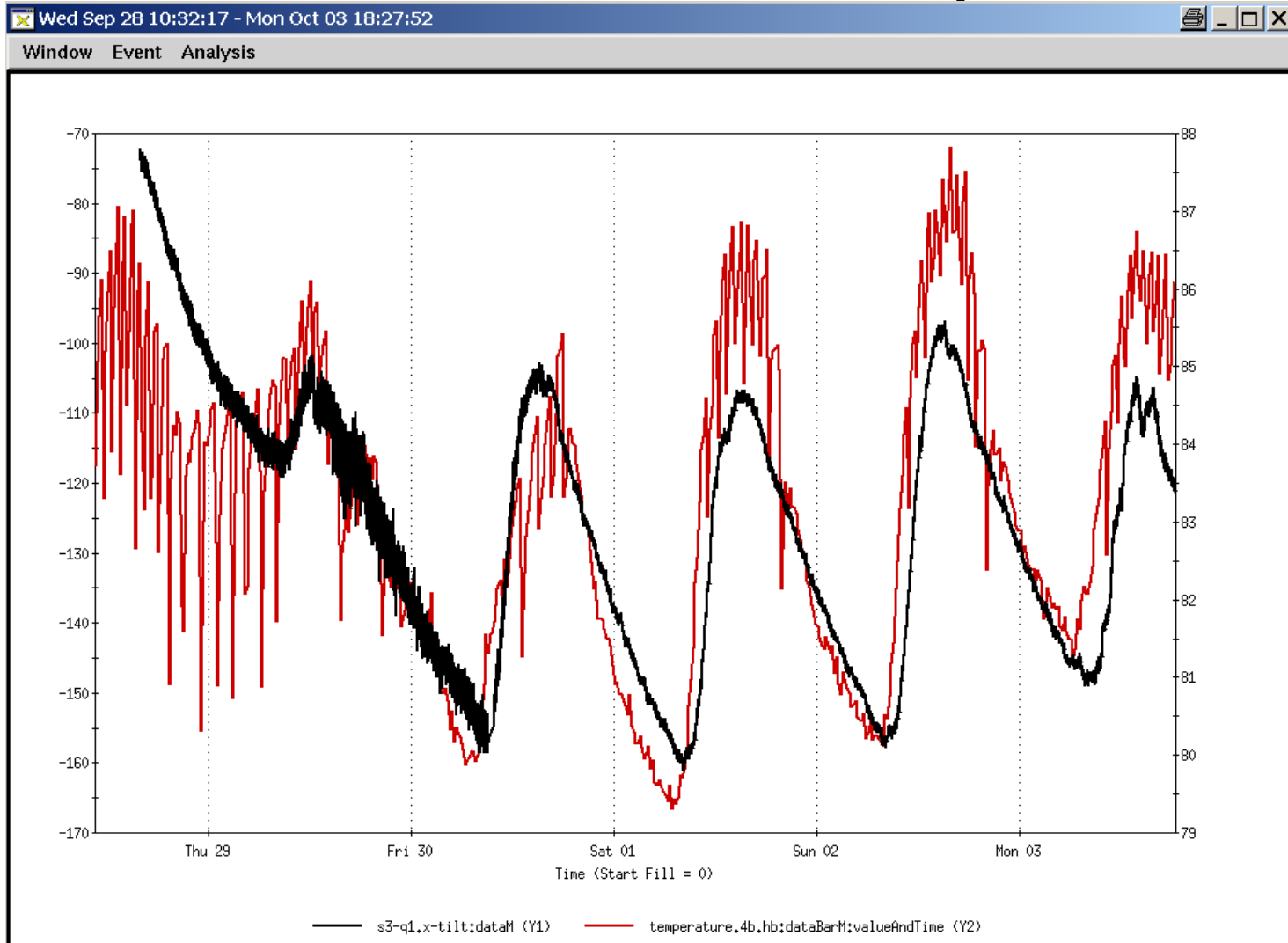
# Sector 3 and 4 Meters on Top-Y



# Sector 7 and 8 Meters on Top-Y



# Sector 3 Q1 X Tilt and 4B HB Temp Mounted on Top



# Sector 8 Q1 X Tilt and 4B HB Temp

